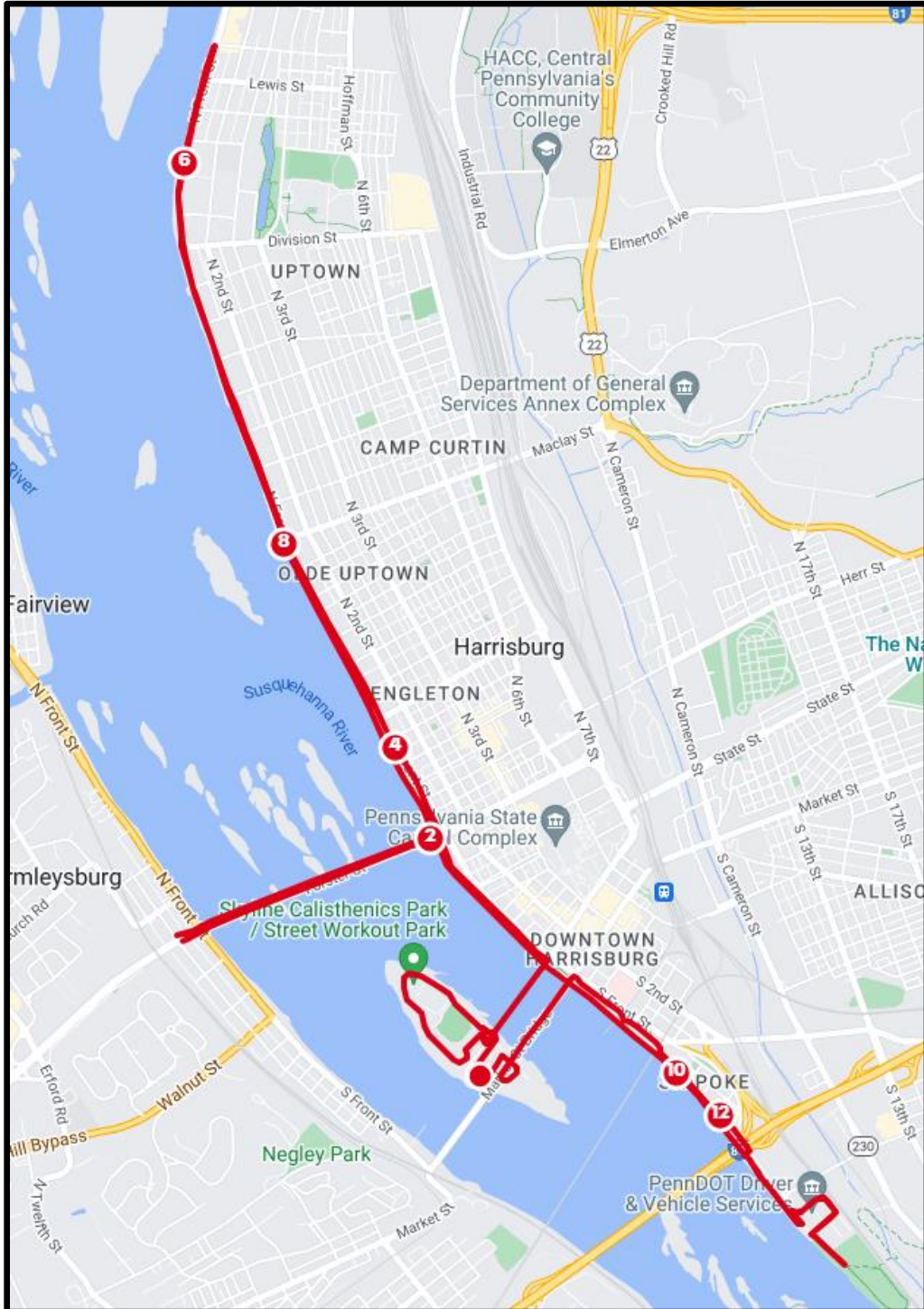




Harrisburg Marathon Course – Turn-by-Turn

Course Overview





Harrisburg Marathon Course – Turn-by-Turn





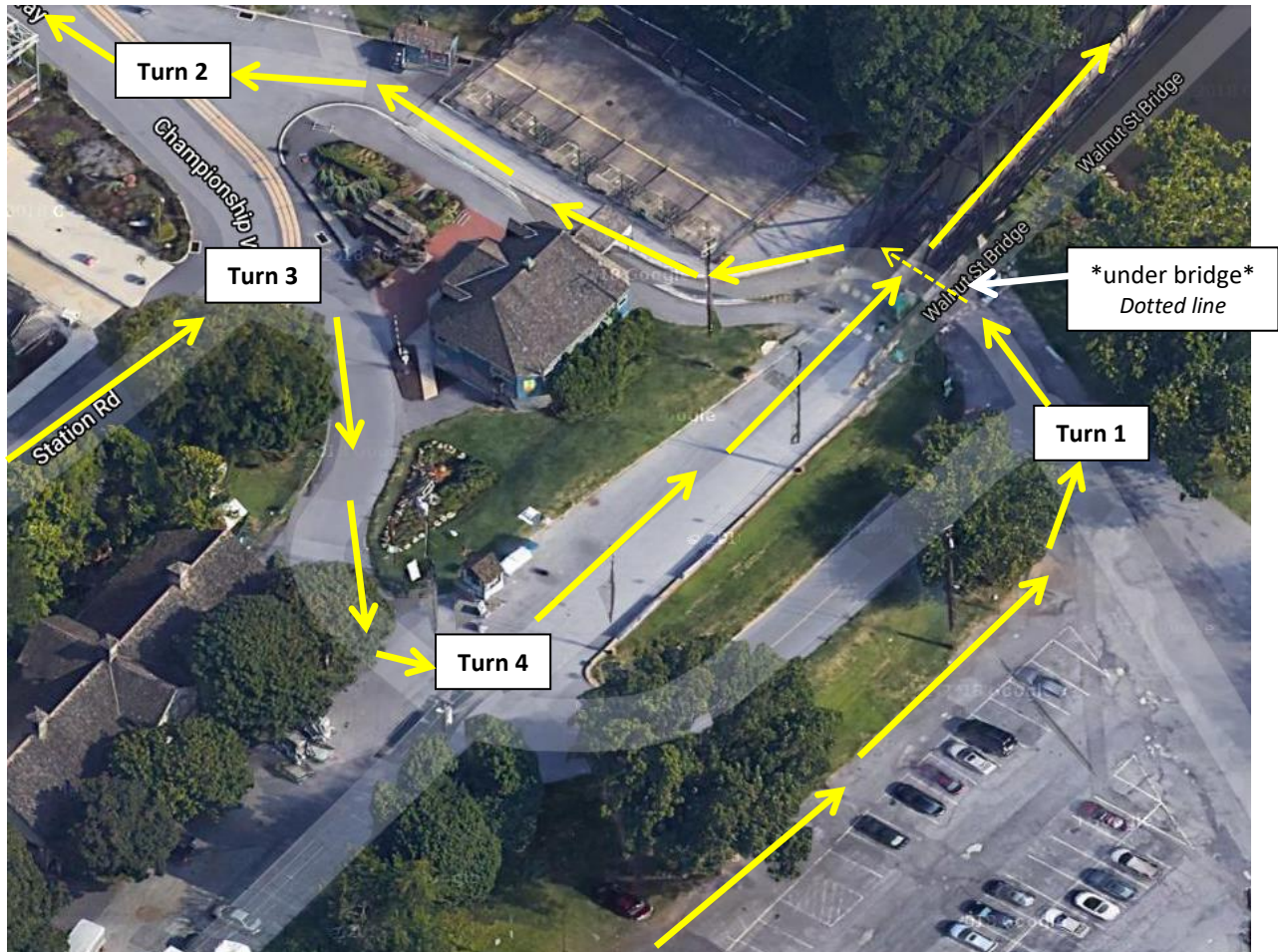
Harrisburg Marathon Course – Turn-by-Turn

1. You will start with a full lap on the road around City Island



See next page for close-up of turns

Harrisburg Marathon Course – Turn-by-Turn



Turn 1 – Make a left at the end of the parking lot and go under the Walnut St Bridge

Turn 2 – Make a slight right and follow the road around City Island

Turn 3 – Make a sharp right and head up the hill.

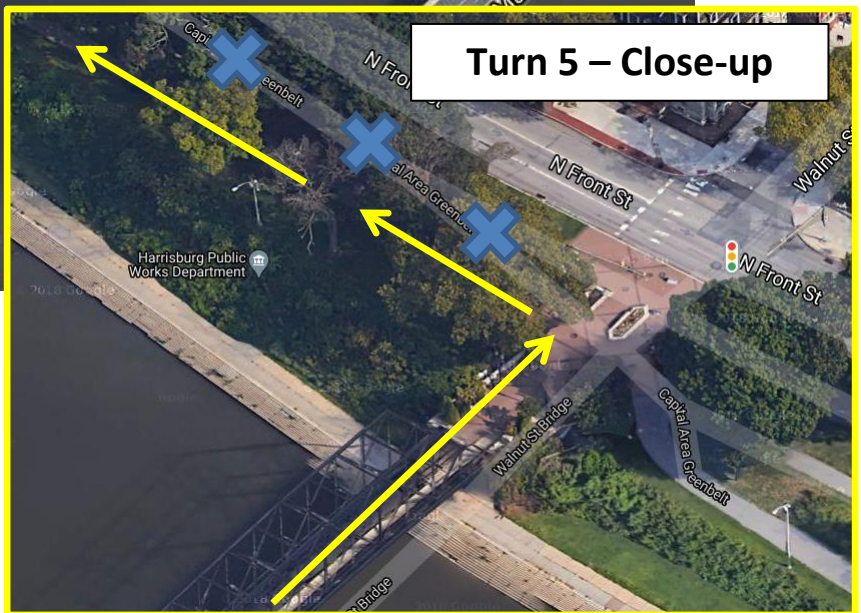
Turn 4 – Make a sharp left and head across the Walnut St Bridge

Harrisburg Marathon Course – Turn-by-Turn

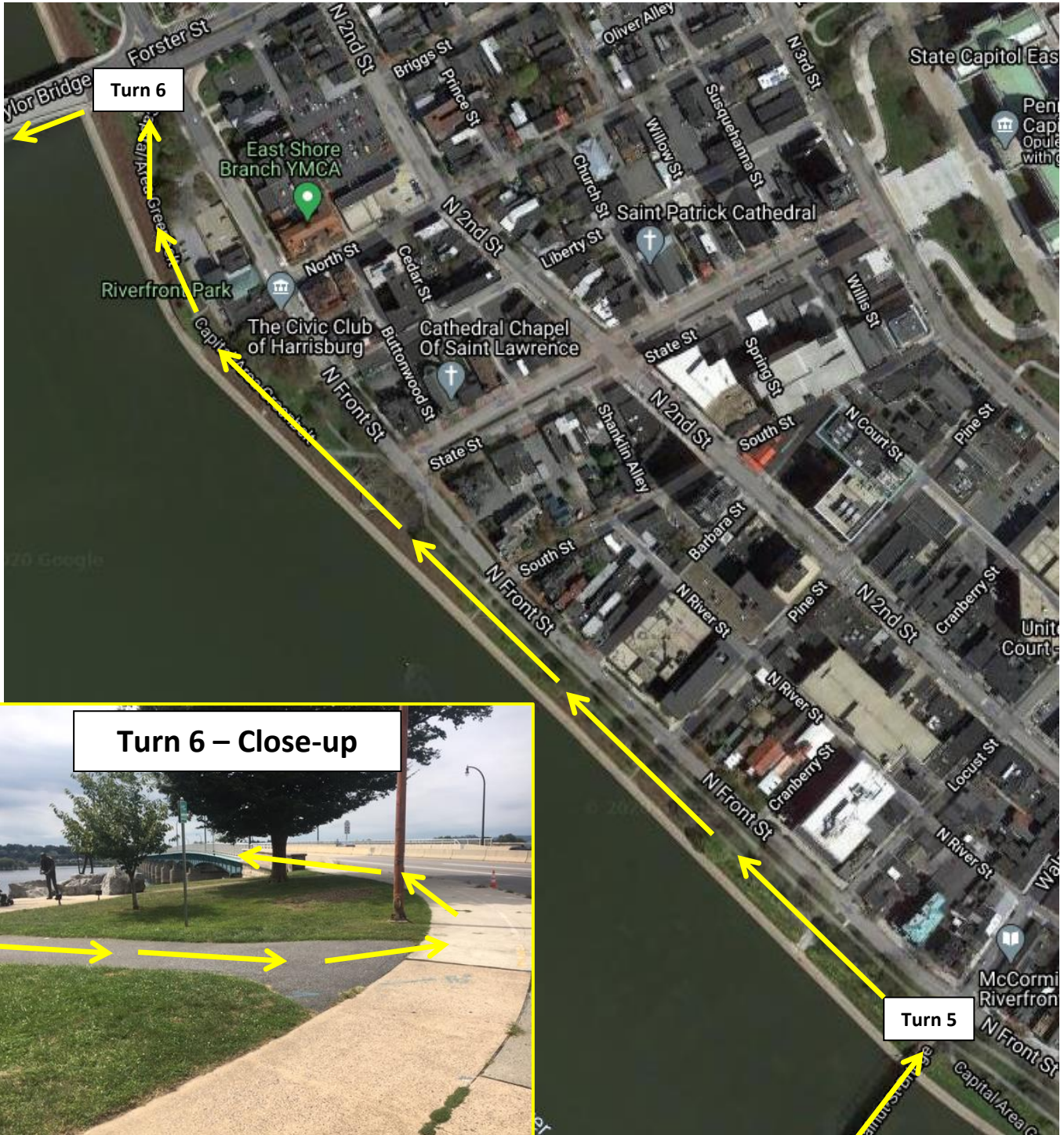


Turn 5 – At the end of the Walnut St Bridge, make a left and head north on the Greenbelt Path closest to the river

There are two parallel paths in this section (one on the river-side and one on the city-side)



Harrisburg Marathon Course – Turn-by-Turn

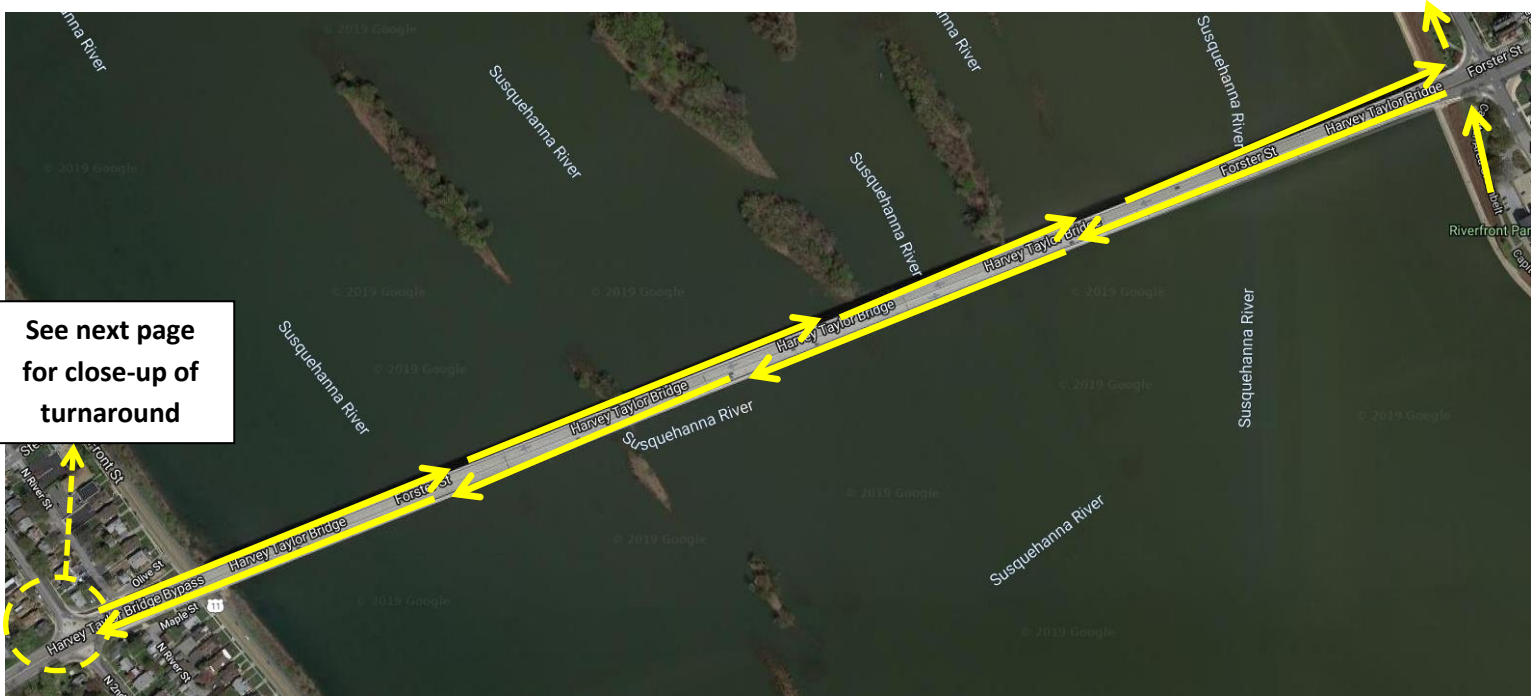


Turn 6 – Make a left from the Greenbelt Path onto the pedestrian walking lane of the Harvey Taylor Bridge and head across the river.



Harrisburg Marathon Course – Turn-by-Turn

Follow the pedestrian lane of the Harvey Taylor Bridge all the way to the west shore, complete the turnaround loop under the bridge the follow the pedestrian lane back to the city of Harrisburg





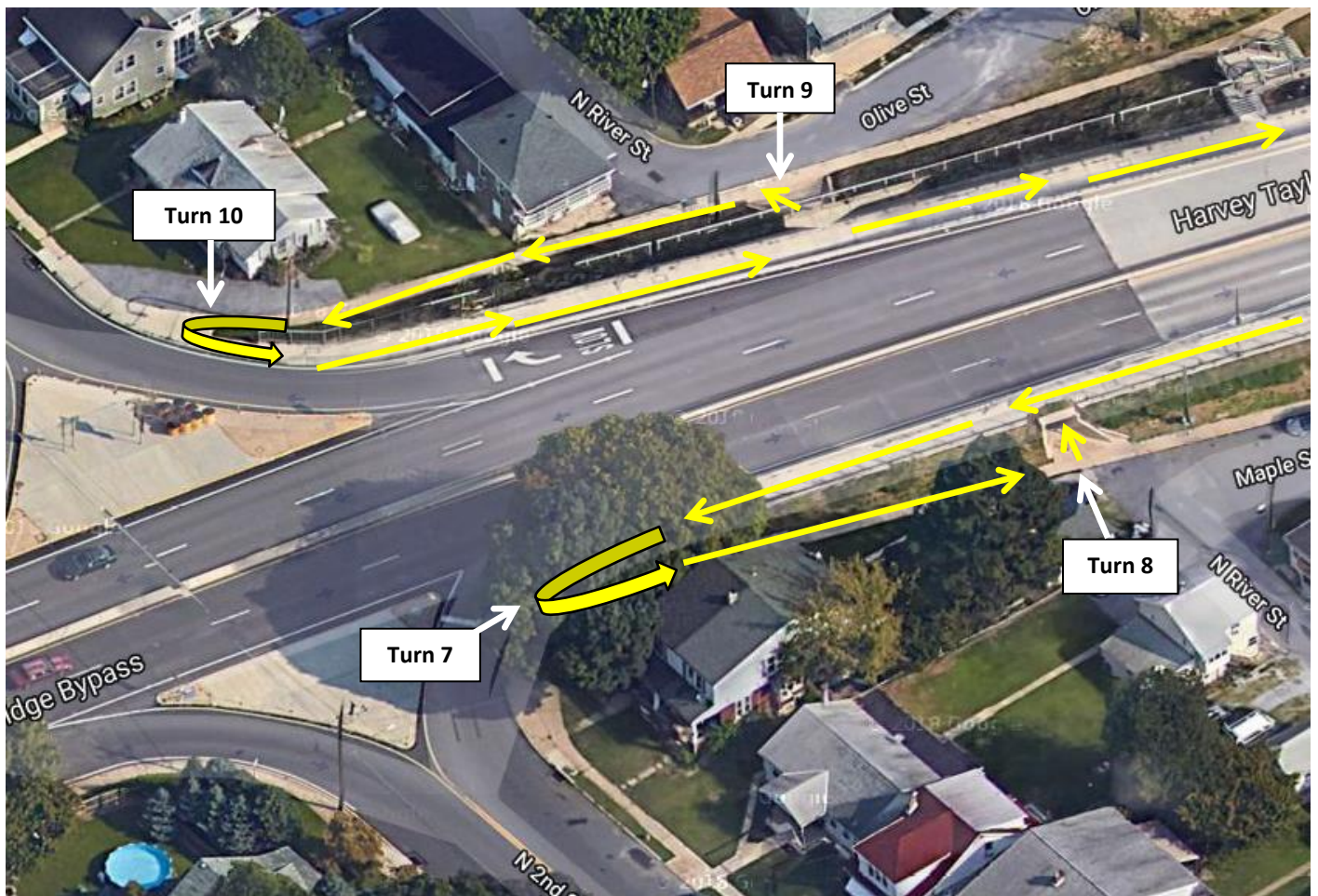
Harrisburg Marathon Course – Turn-by-Turn

Turn 7 – At the end of the pedestrian lane of the Harvey Taylor Bridge, make a left u-turn and head down the sidewalk

Turn 8 – Make a left at the bottom of the sidewalk and go through the tunnel under the bridge

Turn 9 – Make a left at the end of the tunnel and head up the sidewalk

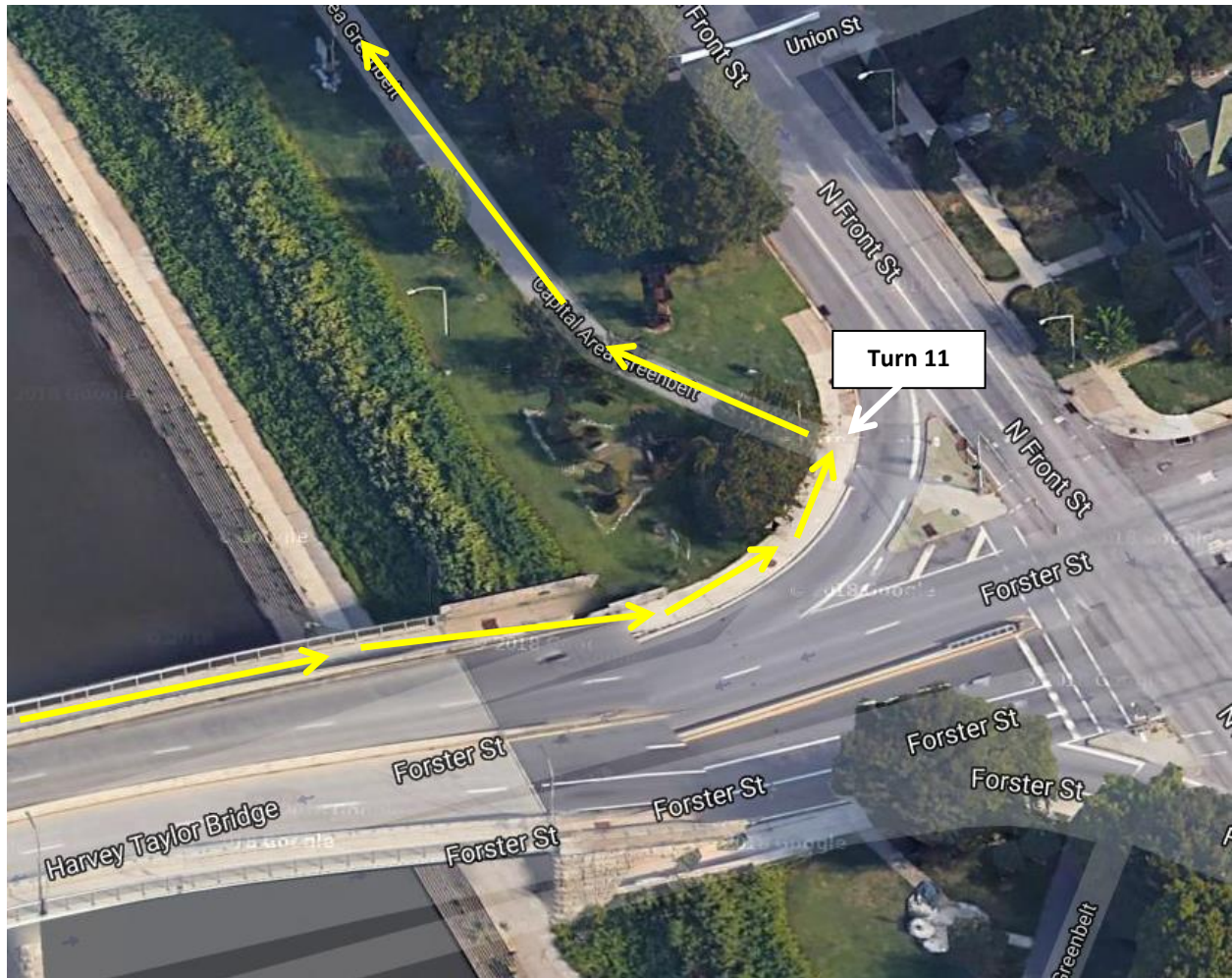
Turn 10 – Make a sharp left u-turn from the sidewalk back onto the pedestrian lane of the Harvey Taylor Bridge and head back towards the city of Harrisburg





Harrisburg Marathon Course – Turn-by-Turn

Turn 11 – At the end of the Harvey Taylor Bridge, make a left onto the Greenbelt Path and head north





Harrisburg Marathon Course – Turn-by-Turn

Turn 12 – When you reach Sunken Gardens, make a right and head towards a coned-off lane of Front St

Turn 13 – Make a slight left from the Greenbelt Path and onto the coned-off lane of Front St, continue to head north.



Harrisburg Marathon Course – Turn-by-Turn

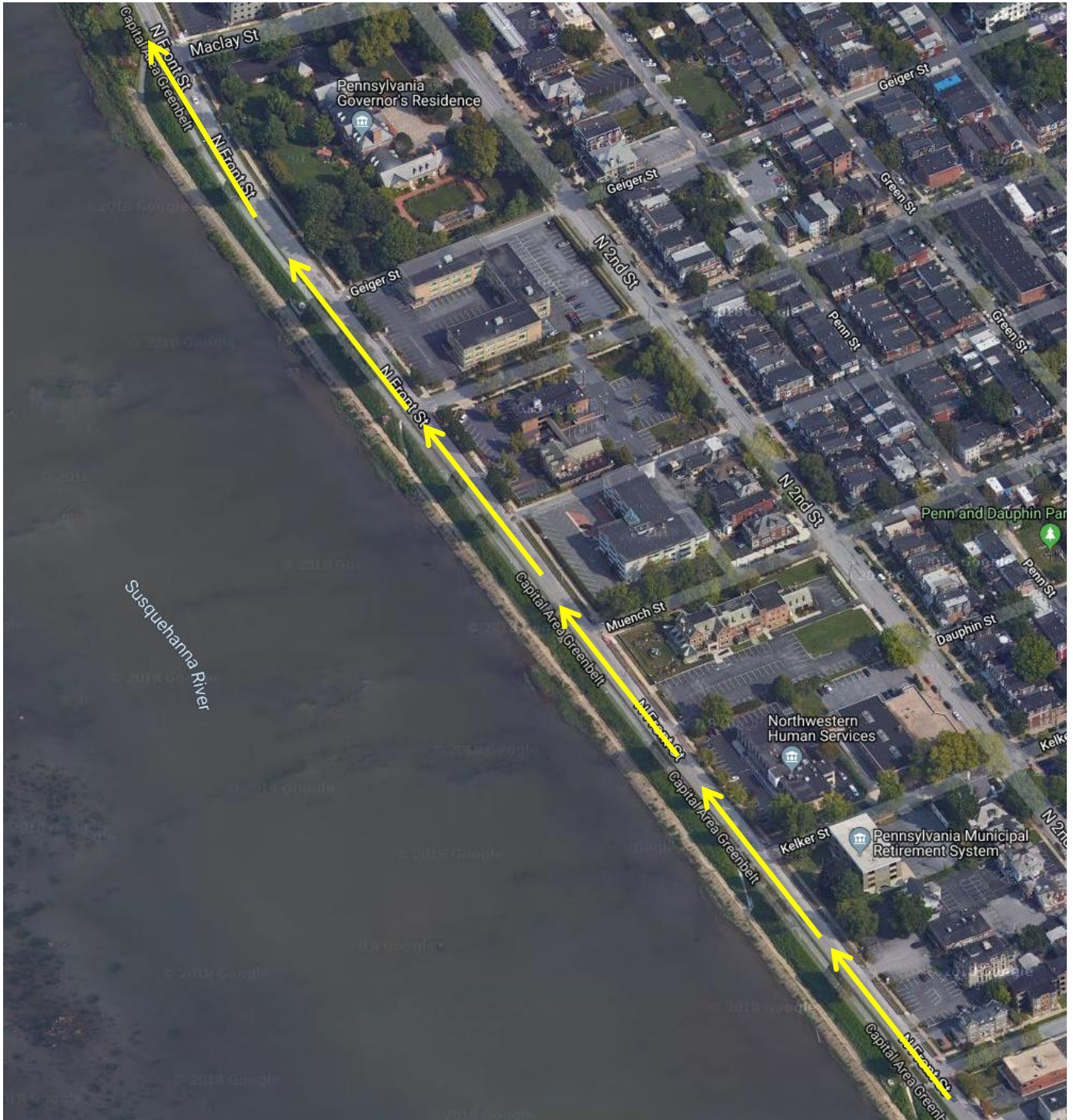
Continue to head north on the coned-off lane of Front St





Harrisburg Marathon Course – Turn-by-Turn

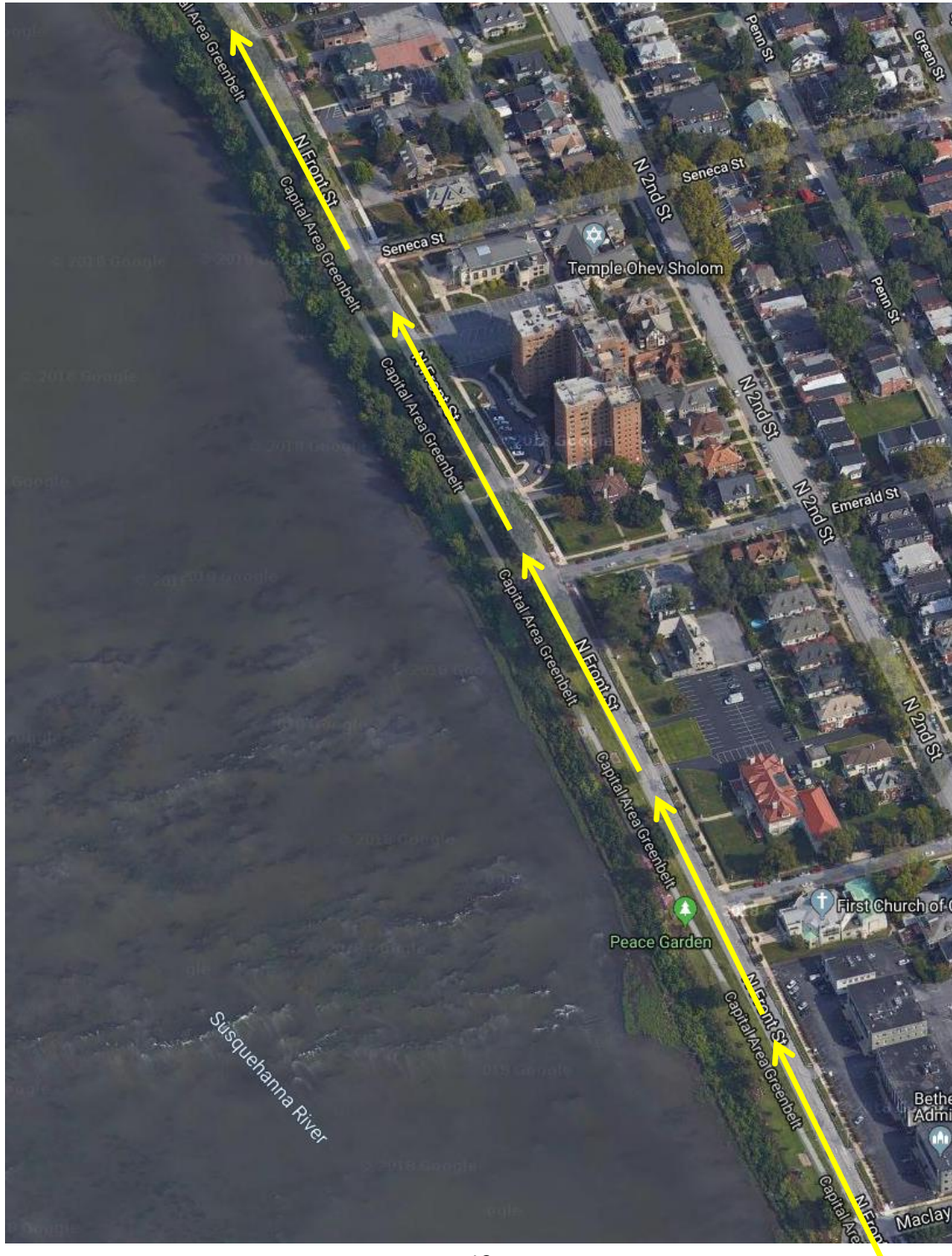
Continue to head north on the coned-off lane of Front St





Harrisburg Marathon Course – Turn-by-Turn

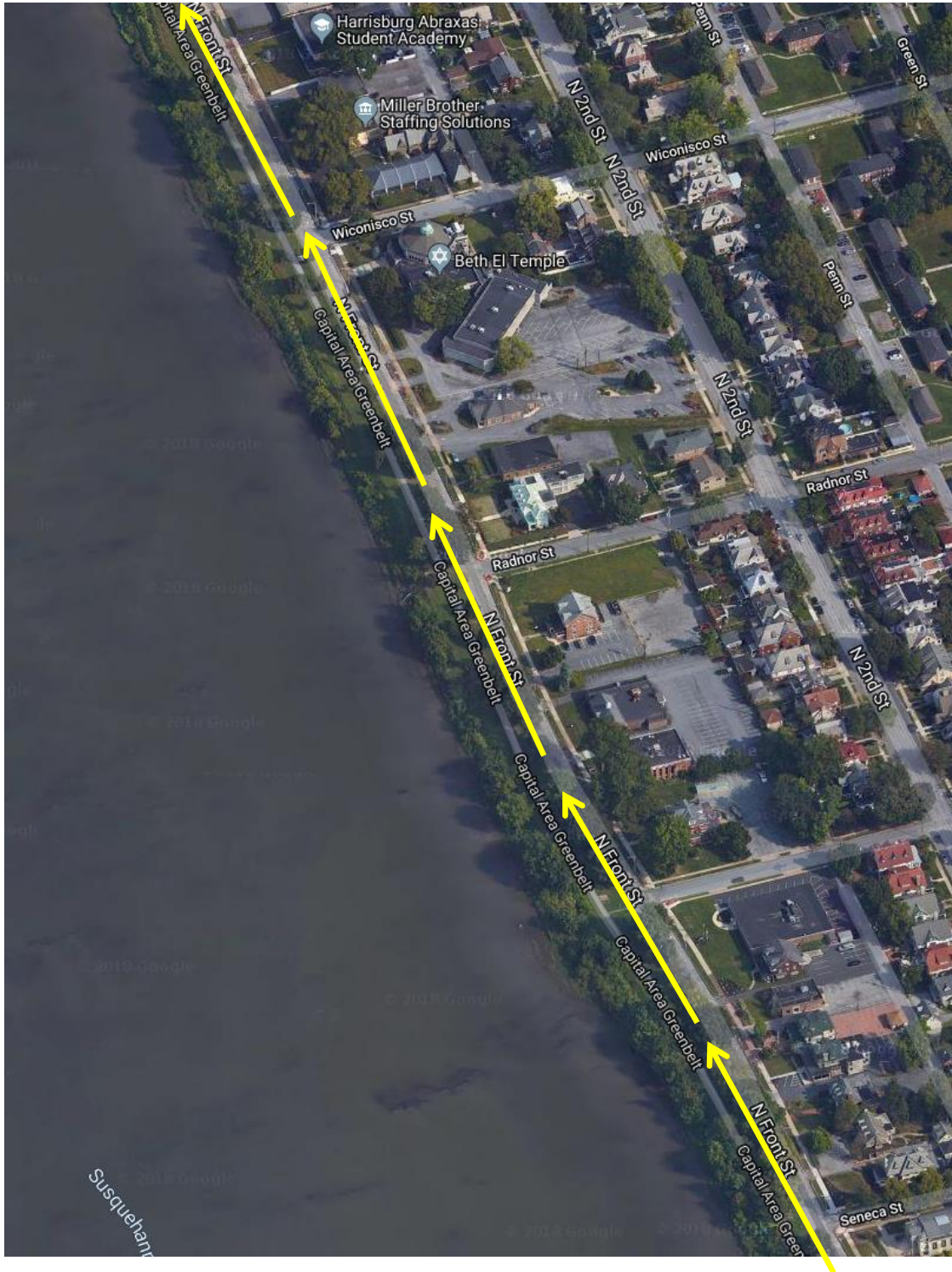
Continue to head north on the coned-off lane of Front St





Harrisburg Marathon Course – Turn-by-Turn

Continue to head north on the coned-off lane of Front St





Harrisburg Marathon Course – Turn-by-Turn

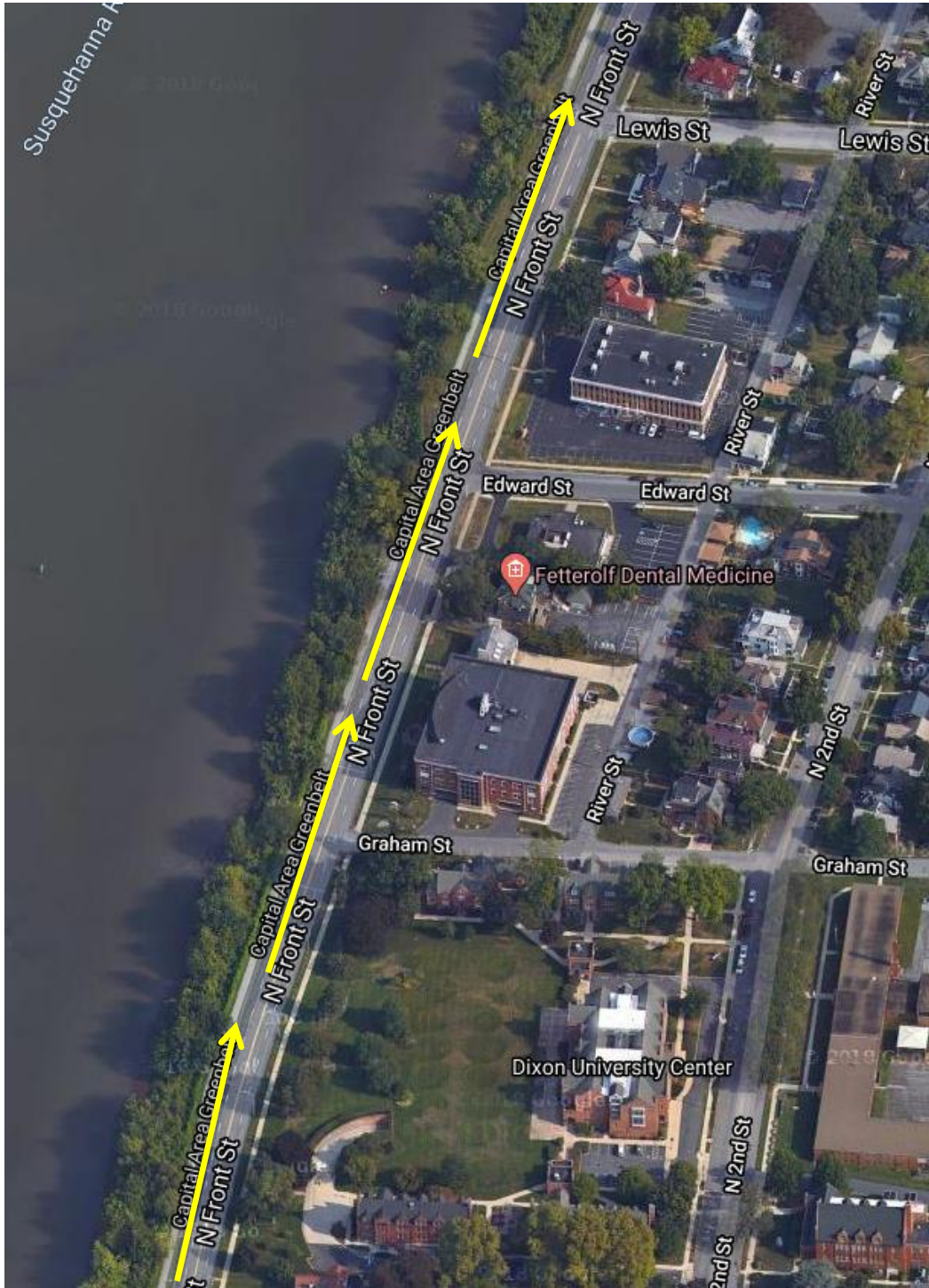
Continue to head north on the coned-off lane of Front St





Harrisburg Marathon Course – Turn-by-Turn

Continue to head north on the coned-off lane of Front St





Harrisburg Marathon Course – Turn-by-Turn

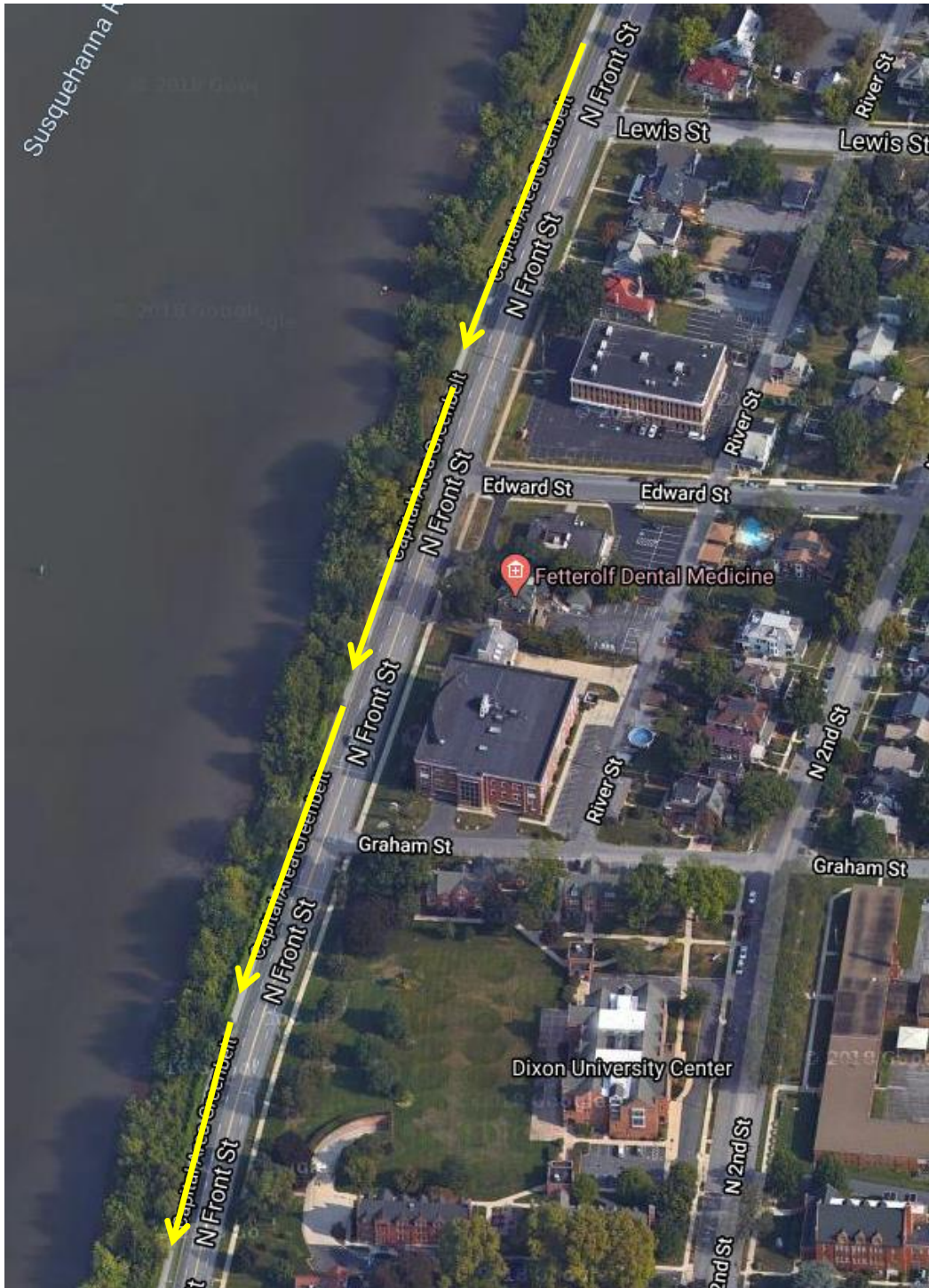
Turn 14 – Turnaround at the turnaround point and head south on the same path you just used heading north.





Harrisburg Marathon Course – Turn-by-Turn

Continue to head south on the Greenbelt path





Harrisburg Marathon Course – Turn-by-Turn

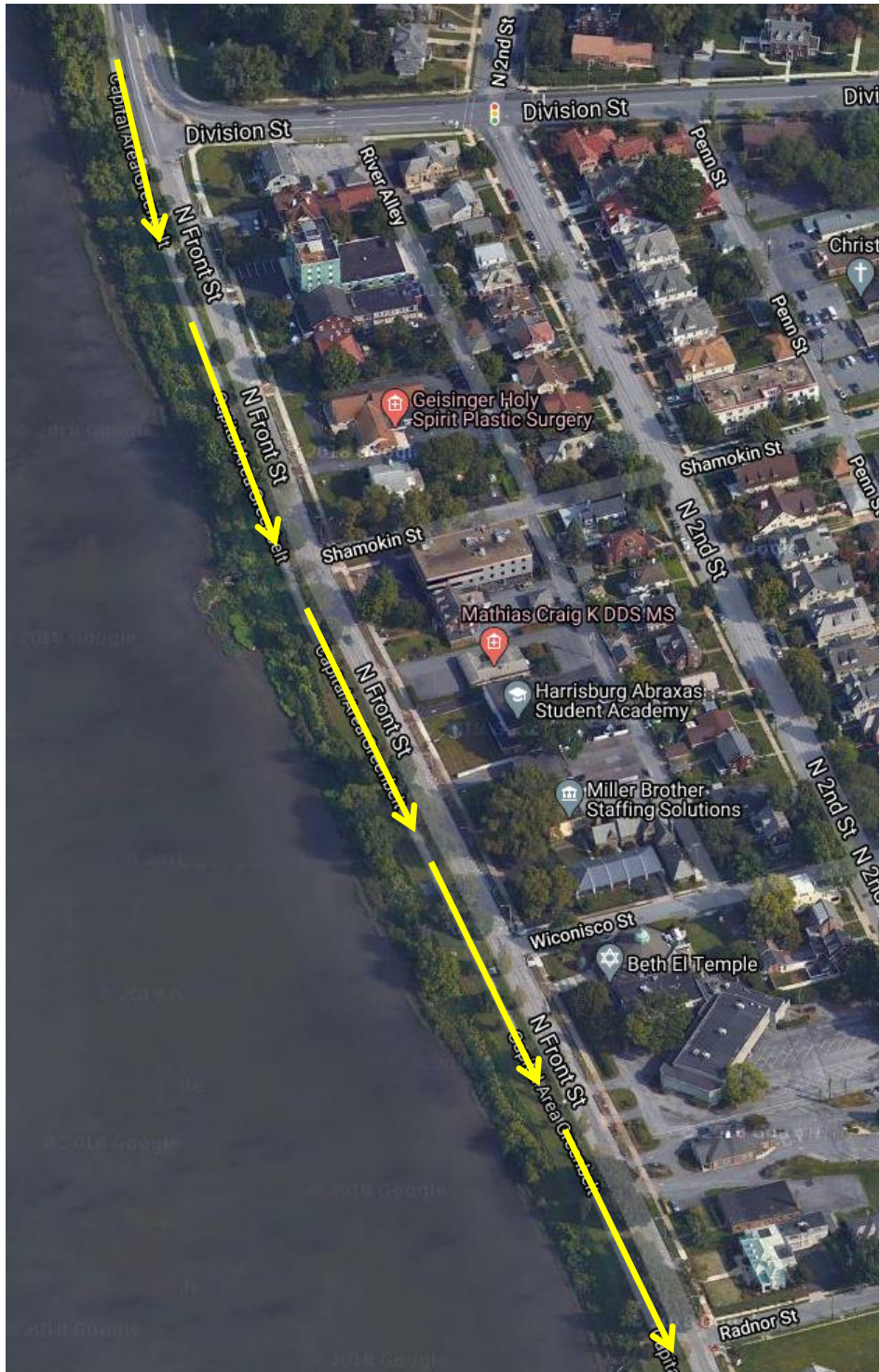
Continue to head south on the Greenbelt path





Harrisburg Marathon Course – Turn-by-Turn

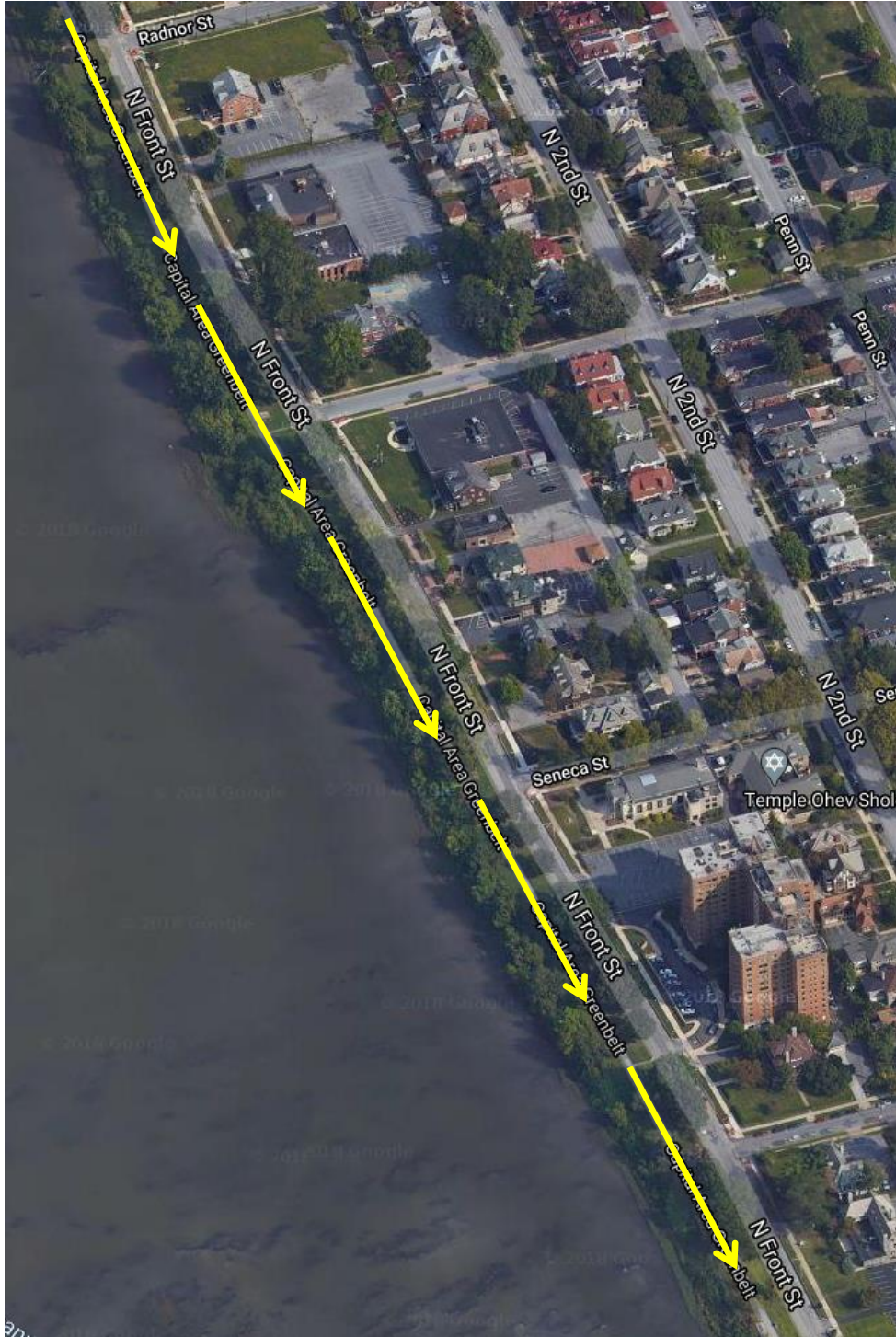
Continue to head south on the Greenbelt path





Harrisburg Marathon Course – Turn-by-Turn

Continue to head south on the Greenbelt path



Harrisburg Marathon Course – Turn-by-Turn

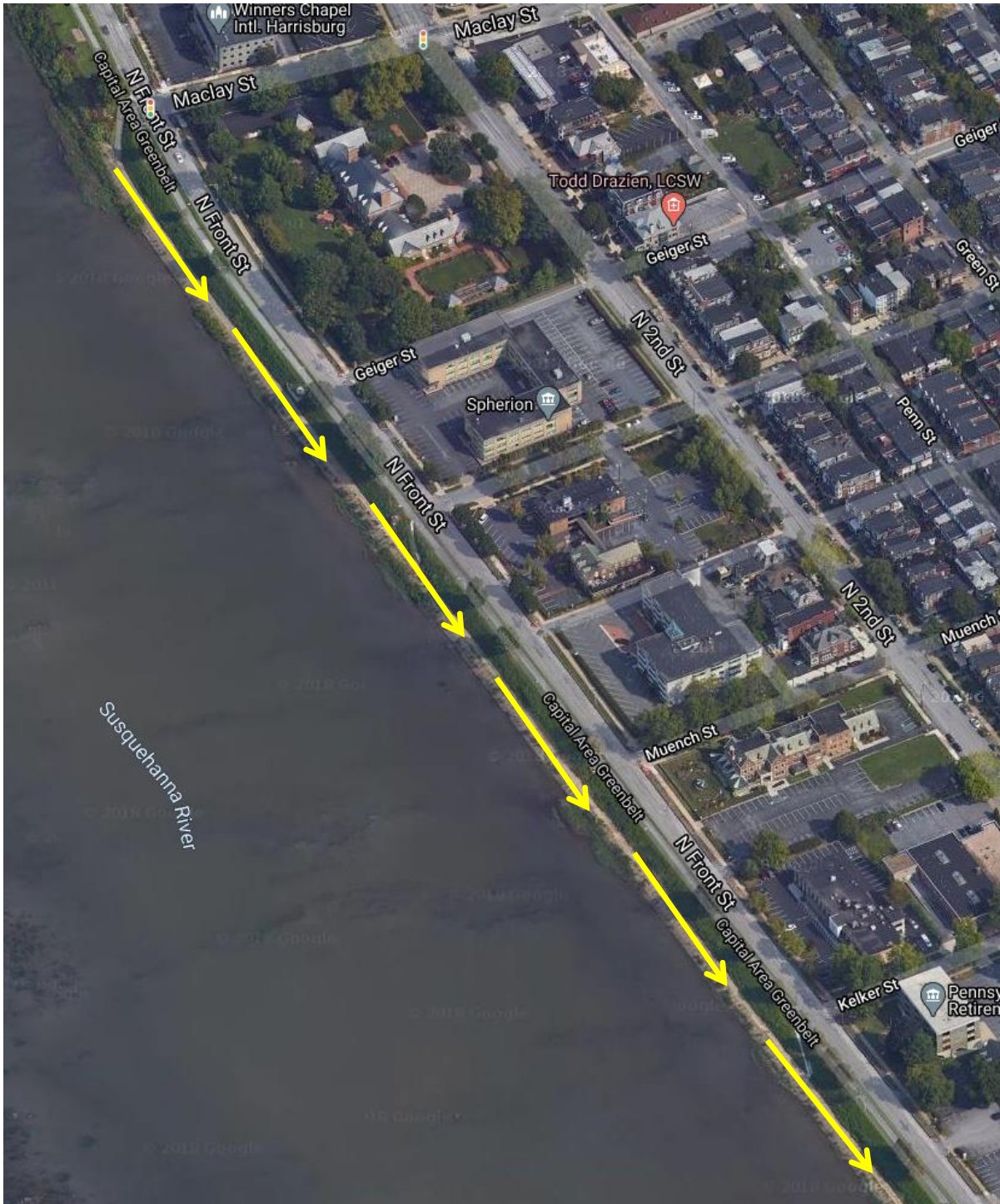
Turn 15 – At the intersection of the Greenbelt Path and Maclay St, make a right turn and go down to the lower level path and continue to head south





Harrisburg Marathon Course – Turn-by-Turn

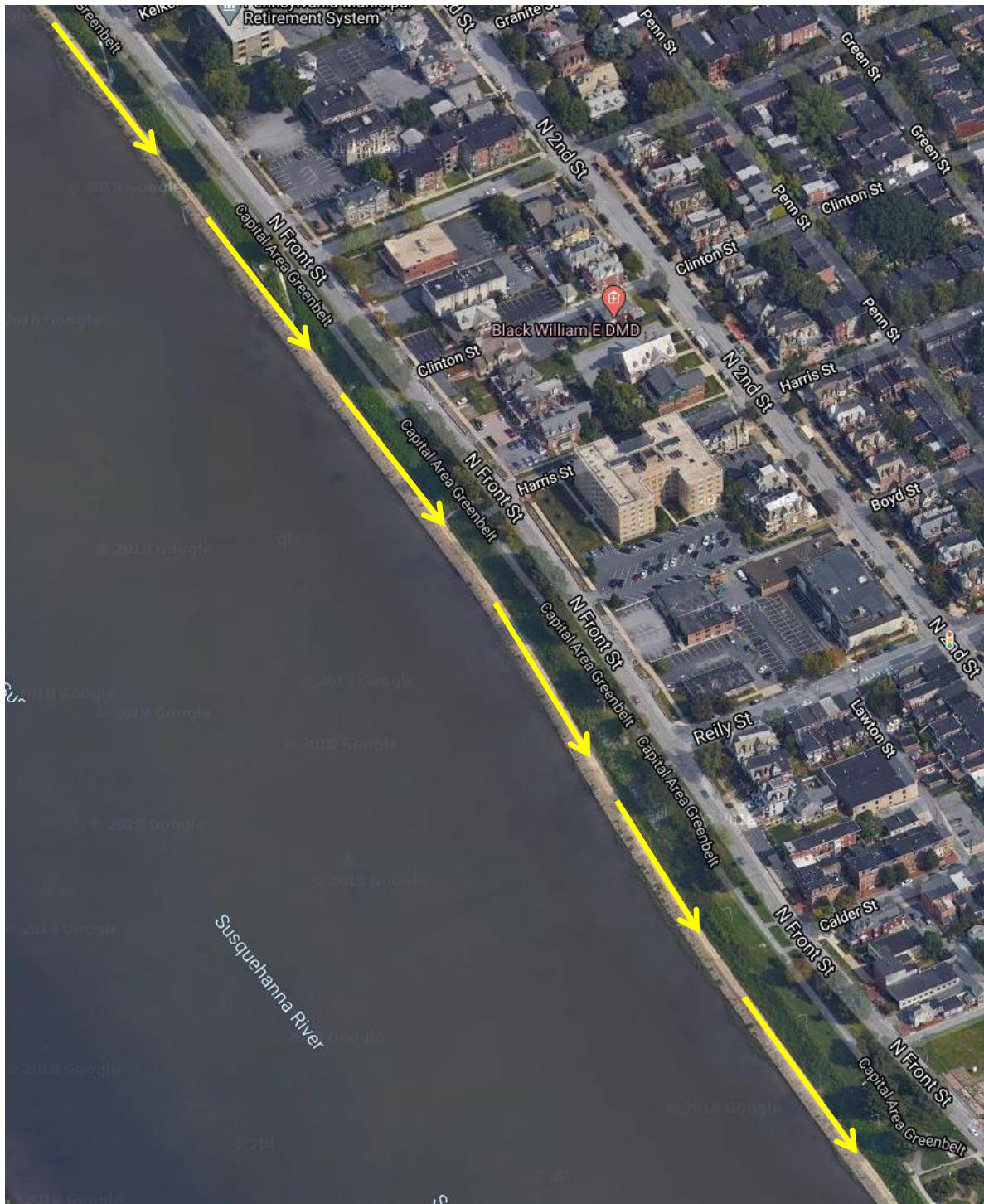
Continue to head south on the lower level path





Harrisburg Marathon Course – Turn-by-Turn

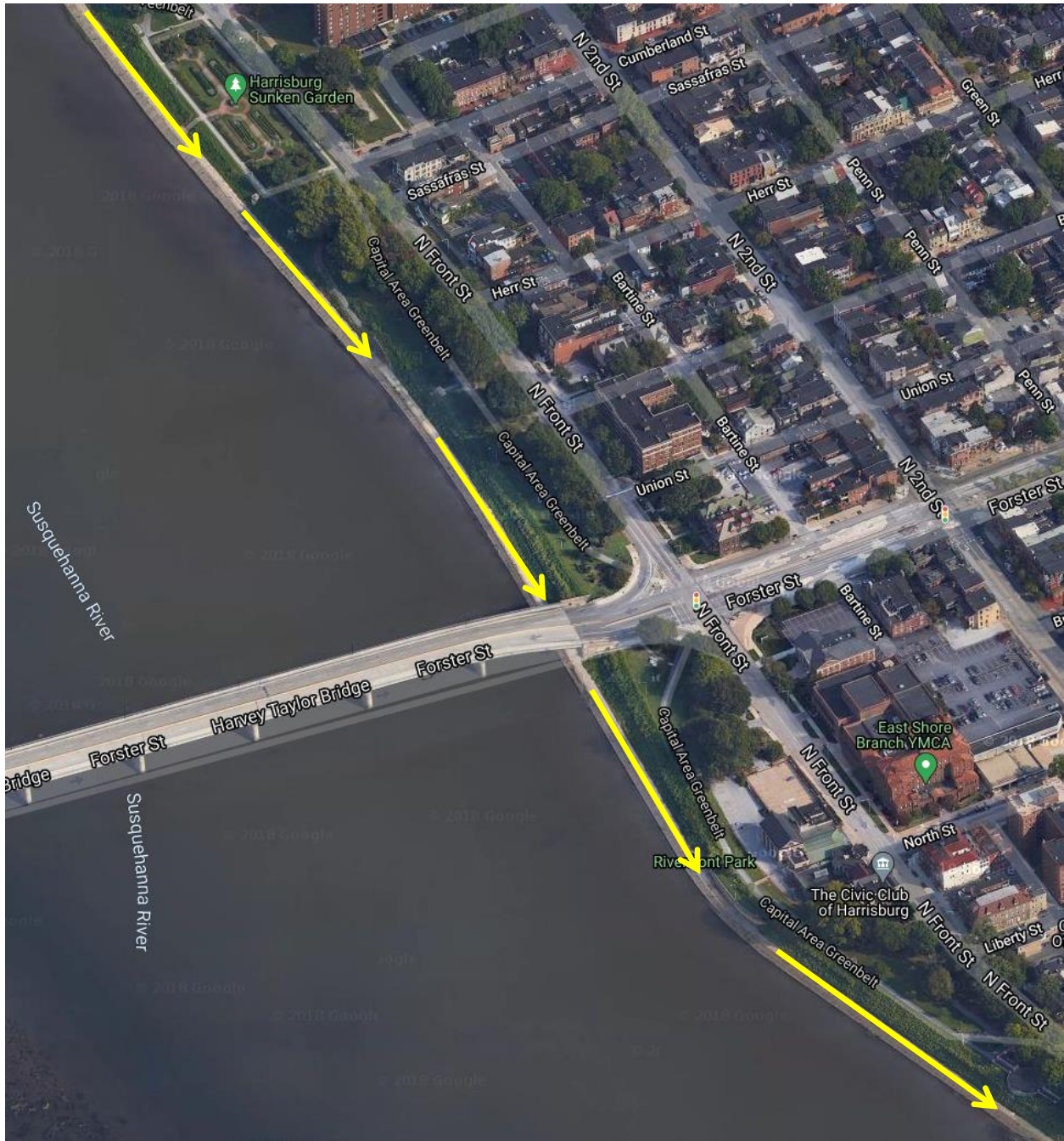
Continue to head south on the lower level path





Harrisburg Marathon Course – Turn-by-Turn

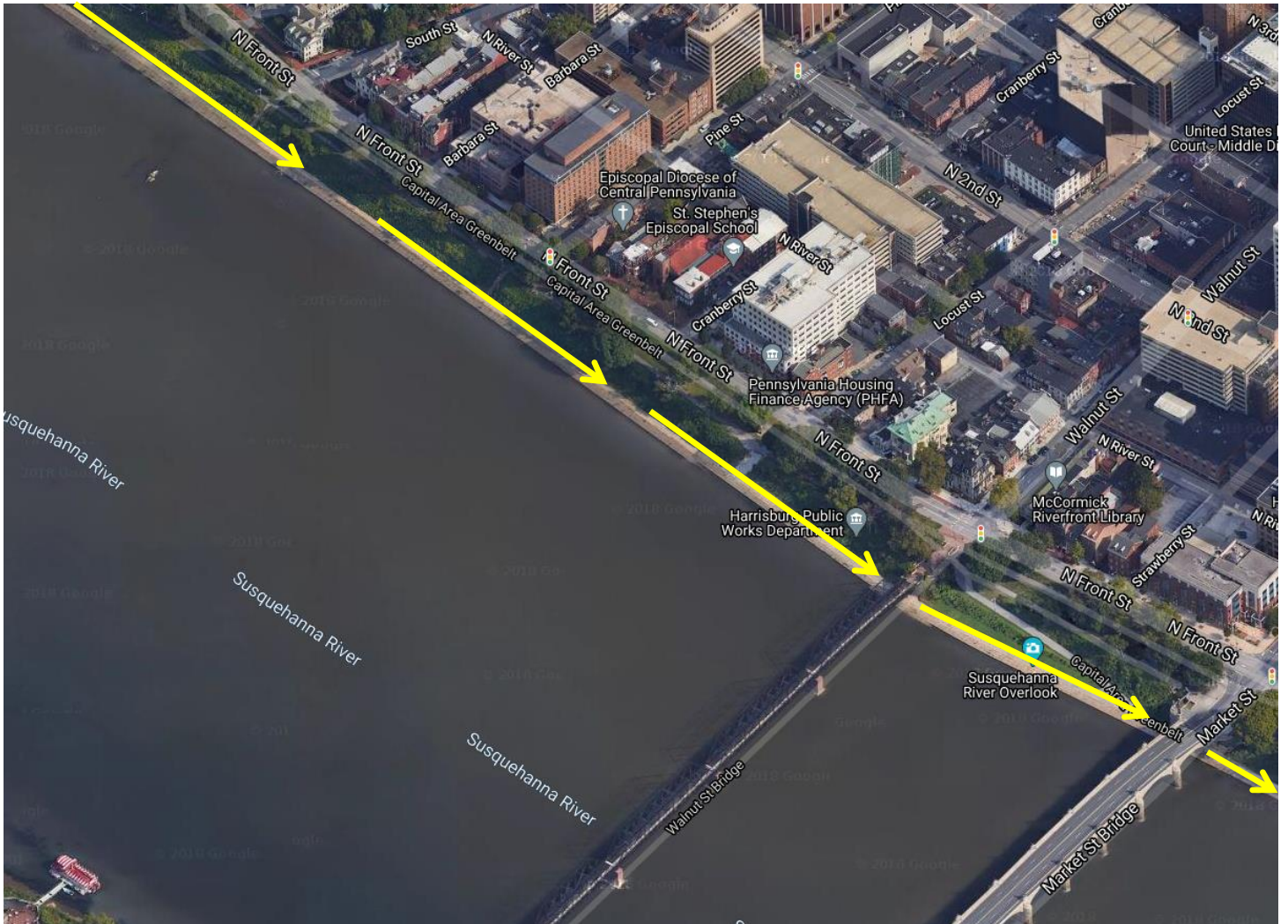
Continue to head south on the lower level path





Harrisburg Marathon Course – Turn-by-Turn

Continue to head south on the lower level path





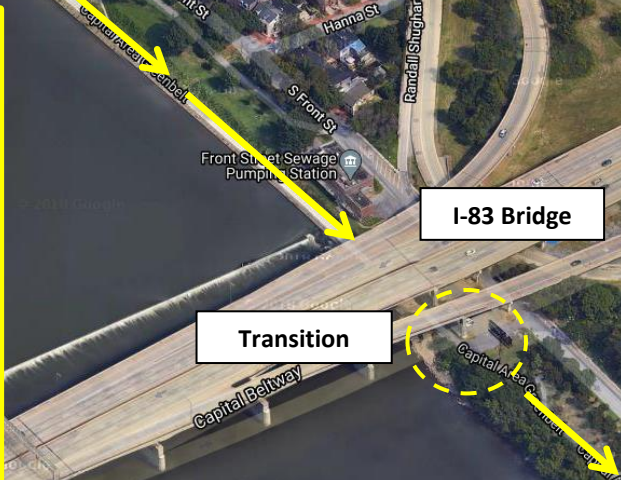
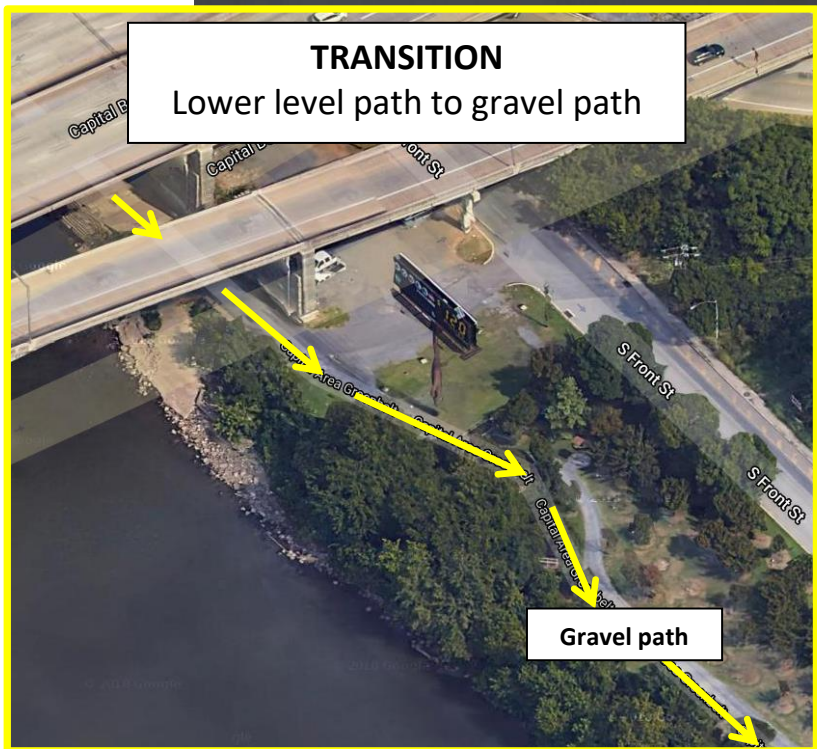
Harrisburg Marathon Course – Turn-by-Turn

Continue to head south on the lower level path



Harrisburg Marathon Course – Turn-by-Turn

Continue to head south on the lower level path and come up at the end of the path and transition onto the gravel path (right under the I-83 Bridge)





Harrisburg Marathon Course – Turn-by-Turn

Continue to head south on the gravel path



Harrisburg Marathon Course – Turn-by-Turn



Turn 16 – At the end of the gravel path, make a sharp left turn in front of the Penndot building.

Turn 17 – When you reach the main road around the Penndot building, make a right turn.

Turn 18 – When you reach the end of the road that goes around Penndot, make a right turn.

Turn 19 – When you reach the end of the Penndot building, make a left turn onto the gravel.

Turn 20 – Turnaround point

Turn 21 – At the end of the gravel path, make a right turn when you reach the Penndot building.

Turn 22 – When you reach the end of the road, make a left turn and continue on the main road around Penndot.

Turn 23 – When you reach the end of the Penndot building, make a left turn and head south.

Turn 24 – When you reach the gravel path, make a sharp right and head north on the path.



Harrisburg Marathon Course – Turn-by-Turn

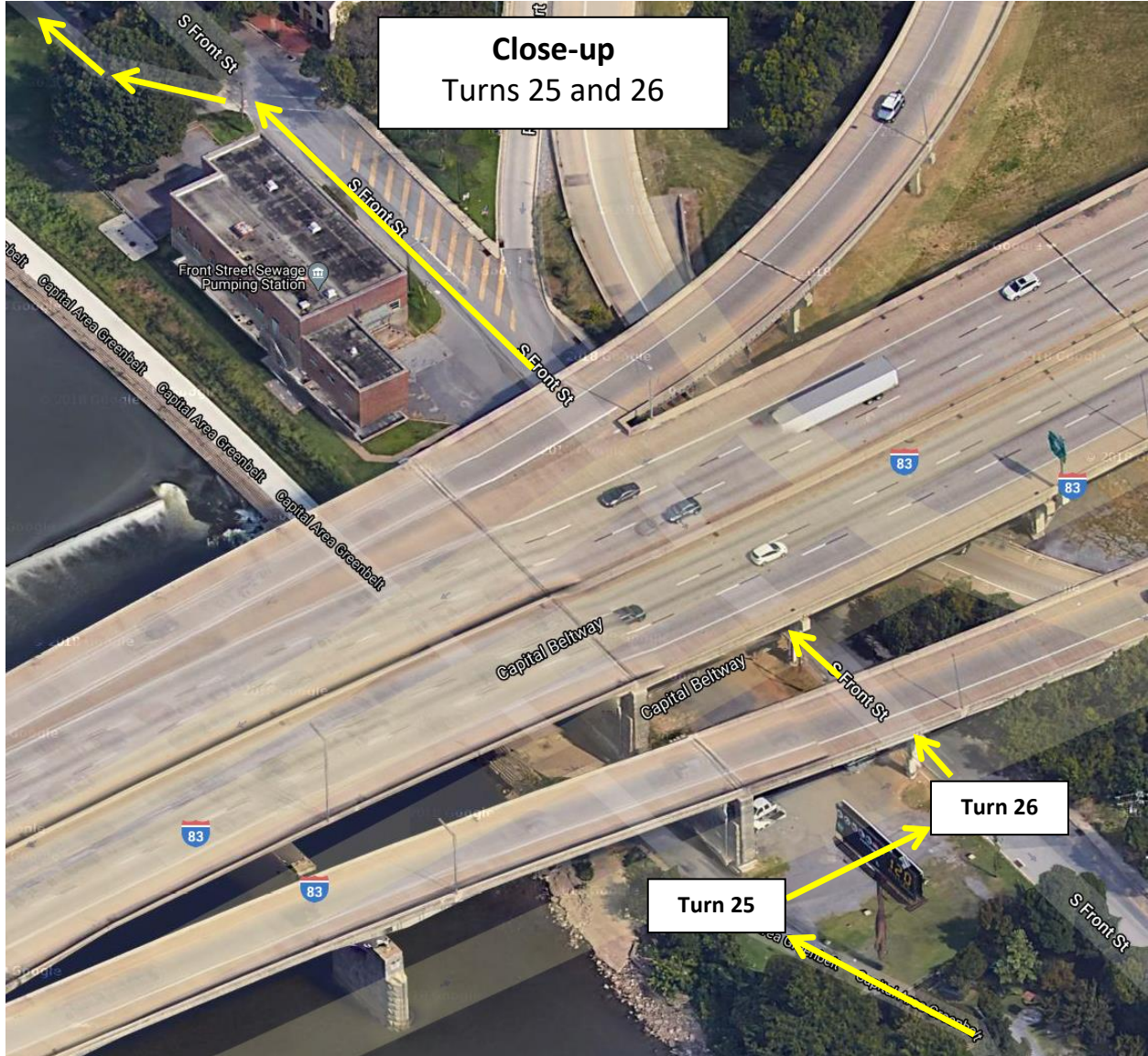
Continue to head north on the gravel path

Turn 25 – Make a right turn at the base of the I-83 Bridge and run a short distance to South Front St

Turn 26 – Turn left onto South Front St and follow the lane of cones under the I-83 Bridge



Harrisburg Marathon Course – Turn-by-Turn



Harrisburg Marathon Course – Turn-by-Turn

Turn 27 – Make a left turn onto the Greenbelt Path that runs parallel to South Front St and continue heading north



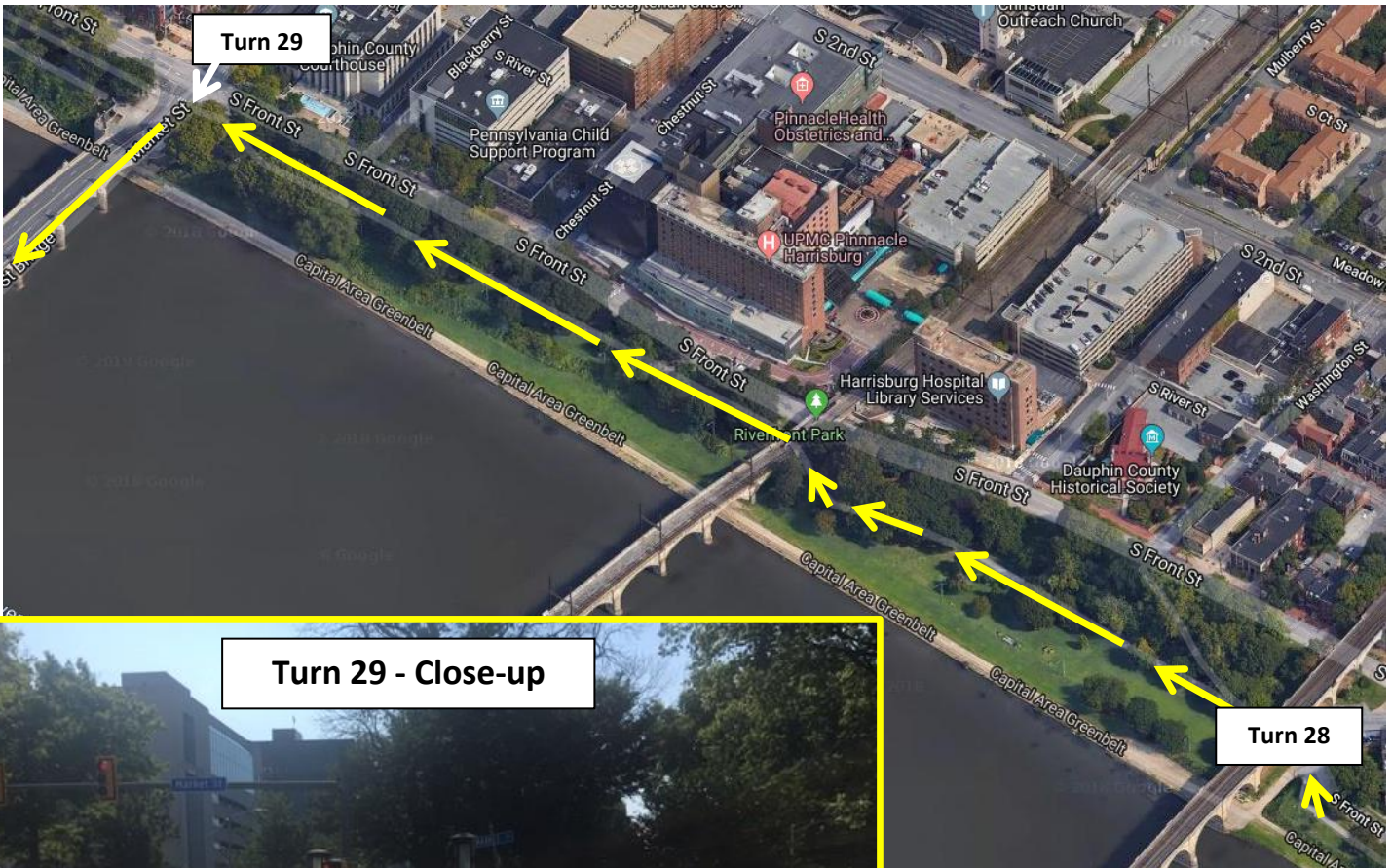
Harrisburg Marathon Course – Turn-by-Turn

Turn 28 – At the end of the path that runs along South Front St, make a slight left and transition onto the Greenbelt Path and continue heading north



Harrisburg Marathon Course – Turn-by-Turn

Turn 29 – After following the path from below the railroad bridge, make a left turn onto the **coned-off lane** of the Market St Bridge and head back towards City Island





Harrisburg Marathon Course – Turn-by-Turn

Turn 30 – When you reach City Island, make a left and continue following the sidewalk down the ramp

Turn 31 - At the bottom of the ramp, make a left and head under the Market St Bridge Bridge on the sidewalk

Turn 32 – After you go under the Market St Bridge, turn left and follow the lane of cones and barricades all the way to the finish line.



Harrisburg Marathon Course – Turn-by-Turn

FINISH

